

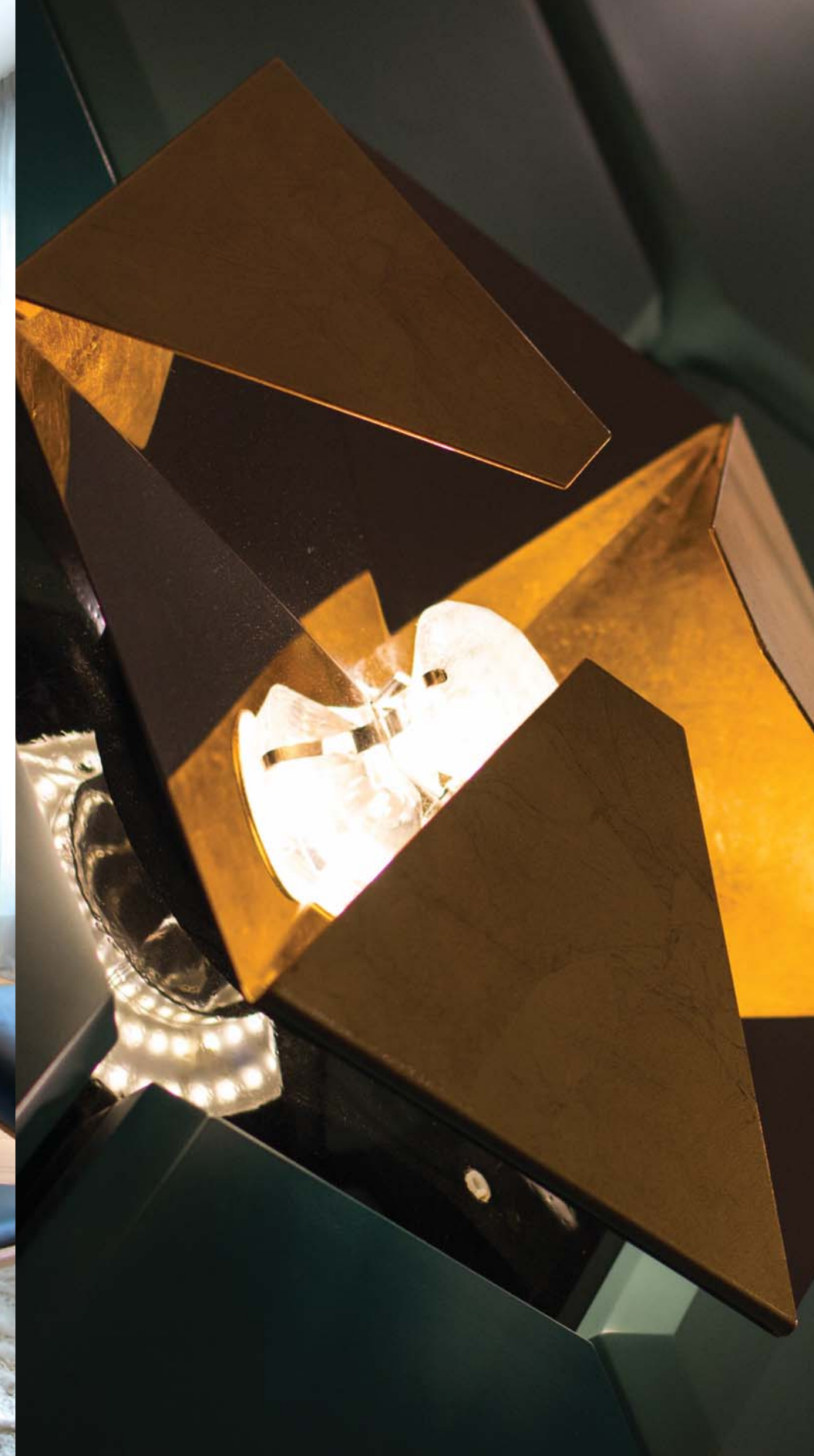
Aline



Art. 270/APP

Patrizia Volpato®

Aline 374 | 375



Art. 270/APP

Ø cm 38 / H cm 11 / Sp cm 14
 Ø 15.60 in / H 5.46 in / Sp 6.24 in

FRONT LIGHT
 LED 13 Watt
 1600 lumen - 3000°K

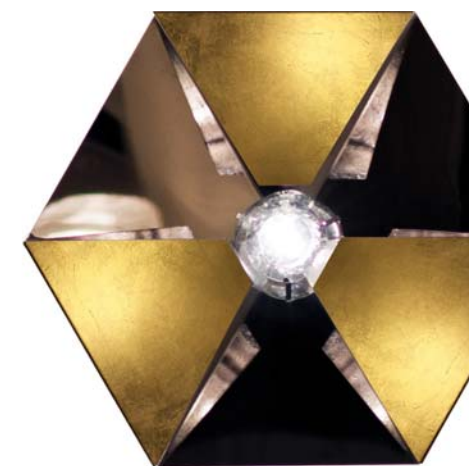


BACK LIGHT
 LED 19 Watt
 1500 lumen - 3000°K



Finiture disponibili / Available finishes

-  Acciaio inox
Stainless steel
-  Bianco opaco
White matt



Già predisposta per essere modulare
Designed to be modular

Art. 271/APP

Ø cm 38 / H cm 11 / Sp cm 14
Ø 15.60 in / H 5.46 in / Sp 6.24 in

FRONT LIGHT
LED 13 Watt
1600 lumen - 3000°K






BACK LIGHT
LED 19 Watt
1500 lumen - 3000°K



Finiture disponibili / Available finishes

-  Acciaio inox
Stainless steel
-  Bianco opaco
White matt

Finiture alette disponibili / Available flaps finishes

-  Foglia oro
Gold leaf
-  Foglia rame
Cooper leaf
-  Foglia nickel nero
Black nickel leaf